

Community Profile: Palmerston North City



Ethnicity	% across all ages (2018)
European	71.5
Māori	15.3
Pacific	3.7
Asian	7.1
Other	13.8

As of 2018, **23%** of young people aged 10-24 live in Palmerston North City.

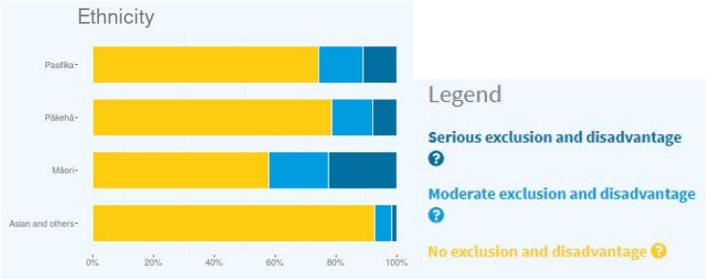
As of 2020, 25% of young people (aged 12-25 years) were excluded and disadvantaged, of which 11% fell into 'serious exclusion and disadvantage' while 14% fell into the 'moderate' category. As age increases, young people are more likely to face exclusion and disadvantage. These rates are slightly higher for males (26.4%) than females (23.7%).

Exclusion and Disadvantage is measured across three areas: Care and Protection and Justice Systems; Education and Employment

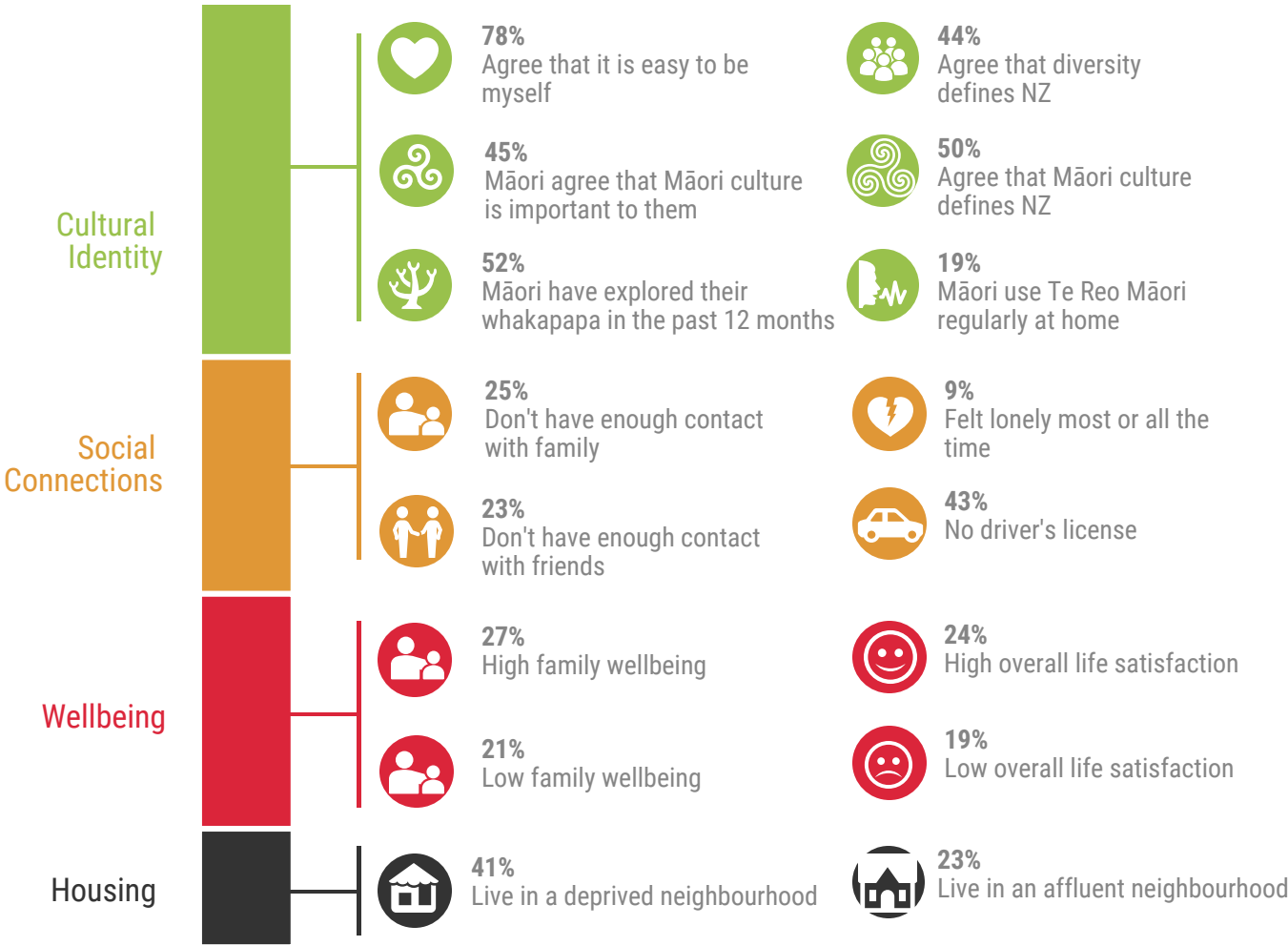
Serious exclusion and disadvantage - young people experiencing this across all three areas

Moderate exclusion and disadvantage - young people experiencing this across two areas, including one high level interaction

No exclusion and disadvantage - who do not fall in the above two categories, but still may have had an isolated interaction with the police or been stood down from school



Below are some key data of the of rangatahi living in **Palmerston North City** aged between 12 and 25 years.



This data is based primarily on the Vodafone Thriving Rangatahi Project (2020) and the 2018 Census

The Thriving Rangatahi data explorer is based on data from the Integrated Data Infrastructure (IDI), managed by StatsNZ. The IDI includes data sources from surveys such as Te Kupenga and the General Social Survey, along with administrative data from government agencies and departments.