

ANNUAL REPORT

'22



Eastern & Central
COMMUNITY TRUST

Eastern & Central COMMUNITY TRUST

Whakatāuki

With vision, with strategy, tomorrow will blossom
Ma te Kite, ma te hanga, ka puawai apopo

Te Whaingā Tahuhu | Vision

Stronger, more sustainable communities.

Te Koruru | Mission

With integrity, courage and expertise, we manage and distribute funds to help build stronger, more sustainable communities in the eastern and central parts of New Zealand's North Island.

Wāriu | Values

Our values are the principles that guide us daily in achieving our vision. Collectively, these values help ensure we leave a lasting legacy where future generations thrive.

Ngākau pono (Integrity): Integrity is at the core of everything we do.

Ngākau Whakaute (Respect): For each other and our communities.

Ahei (Enabling): We enable community organisations to meet their goals and aspirations.

Kaitiakitanga (Guardians): Courageous guardians of our assets, our people and our environment.

Urupare (Responsiveness): We are flexible in responding to our communities' needs.

Contents

4	Chair and CEO's Report
6	Image Gallery
8	Trustees and Staff
10	Becoming TiraRangatahi
12	Image Gallery
14	Summary Financial Statements
16	Notes to the Summary of Financial Statements
17	Report of the Independent Auditor on the Summary Financial Statements
18	List of Grants by Region
22	Total Grants by Sector
23	Funding by Region



Chair and CEO's Report

Kia ora koutou

On behalf of the Board of Trustees and Staff, David and I are pleased to present Eastern & Central Community Trust's (ECCT) Annual Report for the year ending March 31st, 2022.

We hoped that this year would not, once again, be overshadowed by Covid-19 but unfortunately this was not to be the case. Uncertainty in the marketplace has contributed to another difficult year for many of our community groups and organisations, with events and programmes being cancelled or postponed. Our own 2021 Annual Public Meeting, scheduled to be in Gisborne, was again cancelled due to lockdown and eventually held online in October. We are excited to gather once again with our communities at the upcoming 2022 APM and look forward to getting out to visit the regions beyond this.

Board of Trustees / Staff

In July 2021 we bid a fond farewell to outgoing trustees, David Lee, Deputy Chair along with Board Chair, Shelly Mitchell-Jenkins. Both David and Shelly were on the ECCT Board for eight years and their time, effort and expertise have been invaluable to our organization. I was subsequently appointed as the new Board Chair, while Hilary Humphrey, of Manawatū, assumed the Deputy Chair's role.

Four new trustees were appointed to the Board by the Minister of Finance in mid-2021. ECCT welcomed Brendan Duffy and Troy Hobson, both of Levin, Josie Willis of Pōrangahau of Central Hawke's Bay, and Stephanie Maloy, Havelock North.

In January 2022 we sadly said goodbye to three more trustees: Hilary Humphrey, Tom Hullena from Wairarapa and Stephanie Maloy. We would like to thank all the departing Trustees for their time and dedication to our organisation and wish them well in their future activities.

After nearly eight years with ECCT, General Manager Jonathan Bell tendered his resignation to pursue new challenges including setting up his own consulting practice. During his tenure, Jonathan was instrumental in shifting the Trust's funding from transactional to transformational, purchasing office premises in Hastings and diversifying ECCT's investments, resulting in an \$87M increase over eight years.

In February we welcomed our new Chief Executive, David Clapperton. David joined ECCT from Horowhenua District Council where he held the position of Chief Executive for eight years. We would like to acknowledge the contribution of both the Trustees and the Staff in what has been another challenging year. Both the ECCT team, and our communities have continued to adapt to new working conditions, showing continued resilience and flexibility.

Investments

The conflict in Eastern Europe, volatile exchange rates, rising inflation, and interest rates and share markets weakening in the last quarter of the financial year resulted in a lower-than-expected level of growth in the value of our investments. This followed a good result until the end of December 2021.

Our March 2021 result was an increase in our equity base of \$6.1 million compared to \$34.0 million the previous year.

Should the volatility with global markets continue cash reserves are at sufficient levels to allow ECCT to continue at current grant levels for three to four years.

Granting

In 2021, 472 grants totalling \$4,737,916 were assessed and approved. This represents a little over half a million dollars more than the previous financial year but substantially less than in 2020. For the second year running, the total is less than budgeted.

As in 2020-21, several factors continue to impact funding levels. Many organisations postponed or cancelled initiatives / programmes due to the ongoing uncertainty of lockdowns and the new Traffic Light system. Furthermore, organisations shared with us that the Government's Covid-19 relief packages did help offset some funding which normally would have been obtain through grants.

This underfunding is of concern and work is actively being done behind the scenes to ensure that ECCT's grant policies are being evaluated to ensure they are serving their intended purpose. Proactive communication with our diverse stakeholders is being undertaken to ensure we are clearly reaching those that require our assistance. Increased face-to-face time is also being prioritised.

With life now returning to a degree of normalcy, we are once again seeing an uptick in applications so are optimistic that our granting levels will resume to post Covid-19 levels.

Rangatahi Strategic Fund Project

The Rangatahi Action Plan driven by ECCT's rōpū taiohi, a group of young people from across the ECCT regions, has been progressing exceptionally well. They launched their second funding initiative, Champion Rangatahi Development fund, despite the challenges of lockdowns and substantial effort has been undertaken to get this initiative underway.

The Rangatahi Action Plan highlights a real change in direction for ECCT, with a focus on empowering rangatahi to make their own decisions with regards to funding, to be part of the process, and to guide our strategies to enable the best impact for young people. We are exceptionally proud of the rōpū and their efforts to make a real difference in their communities

and we commend them for their mahi throughout the year. The rōpū have provided their own overview for the annual report.

Lastly, we would like to commend all those across our communities that managed to persevere through the year and its ensuing challenges. You are the real heroes and ECCT will continue to offer support and guidance as we move ahead. We are ever hopeful that we are on the other side of this pandemic, and that we can soon return to a degree of normalcy.



A handwritten signature in black ink.

Georgina Morrison
Chair



A handwritten signature in black ink.

David Clapperton
Chief Executive



Cycling without Age Napier Trust



Kahurangi Kokako - Pūkaha Mount Bruce Board



Matapuna Trust, Tairāwhiti



The Firebird. Royal New Zealand Ballet. Photo credit: Stephen A'Court



Palmerston North City Library Reading Programmes 2021-22



North Island Endurance Championships



Tyrone the Horse – Kimbolton Arts & Sculpture Trust



Norsewood Pioneer Library



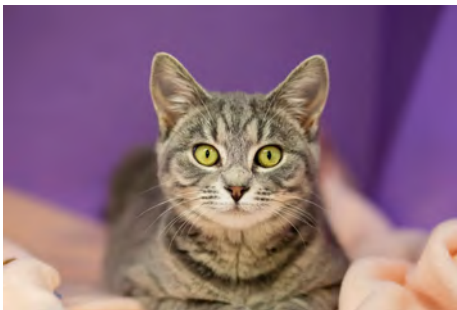
TiraRangatahi visit to LIFT Youth Employment Charitable Trust



Rangatahi-Led grant. An environmental taiao project in Whakaki



Completed Splash Pad, 2020 Grant. Palmerston North District Council



Bonnie the cat from Palmerston North /



Neema the dog from Tairawhiti - SPCA



Breaking ground - Taradale Bridge Club

Trustees



Georgina Morrison
Chair



Troy Hobson
Deputy Chair



Brendan Duffy



Rena Kohere



Robyn Gail Munro



Sarah Paku



Whiti Timutimu



Levi Walford



Josephine Willis

Staff



David Clapperton
Chief Executive



Rose Artemiev
Community Advisor



Neil Attapattu
Community Advisor



Patricia Devlin
Grants Assessor



Nadia Hardie
Marketing & Communications Manager



Kristal Leach
Business Manager



Jill Wolland
Grants Assessor

TRUSTEES	REGION	RETIREMENT DATE
Georgina Morrison Chair	Tararua	May 2022
Troy Hobson Deputy Chair	Horowhenua	May 2023
Brendan Duffy	Horowhenua	May 2025
Rena Kohere	Tairāwhiti	May 2024
Robyn Gail Munro	Manawatū	May 2024
Sarah Paku	Hawke's Bay	May 2022
Whiti Timutimu	Tairāwhiti	May 2023
Levi Walford	Hawke's Bay	May 2023
Josephine Willis	Hawke's Bay	May 2025

Bankers
Westpac

Auditor
Baker Tilly Staples Rodway
Audit Limited

Financial Advisors
MCA NZ Limited





Becoming TiraRangatahi: *The group that weaves youth together as one*

It is an absolute pleasure and privilege to be a part of the rōpū that is now known as TiraRangatahi.

Over the past year, our most significant achievement was launching the Rangatahi Action Plan. The strategic plan is authentic by being made for rangatahi by rangatahi. Through the ECCT funding, we can take action in our communities and tackle challenges that rangatahi face in everyday life; having pūtea made available for the betterment for our next gen.

TiraRangatahi has achieved so much in the last year. We've been able to really get down to the nitty gritty of what we want our rōpū to be about. We are all about empowering our focus groups and making

more opportunities for those rangatahi whether that's through our funds to rangatahi directly or supporting other organisations to fill those gaps. We started our own unique touch in social media, developed our own brand and kaupapa.

We as TiraRangatahi have stepped out of the norm of rangatahi development and have created unique opportunities of positive change for rangatahi across our rohe through the utilisation of the \$4 million dollars allocated to the Action Plan. Over the year, we have encountered numerous amounts of koeke, rangatahi, kaumātua and tamariki throughout our journey that have felt inspired by this kaupapa and although we as a rōpū were nervous to begin with, the endless amount of support we receive from our iwi, hapū and ECCT allows us to grow in pathways we never thought possible. Through the journey, we travelled around the ECCT rohe, met with awesome rangatahi and champion rangatahi spaces that really gave us an outlook on what is needed in our communities. The insights rangatahi gave us drove our kaupapa and helped us stay focused on what is important to rangatahi, their ideas and solutions for our communities.

Our rangatahi-led funding had its second year and we funded 31 projects over the year across the ECCT rohe from \$250 up to \$5,000. There were lots of different and diverse rangatahi run mahi with projects like rangatahi with disabilities running a camp for their peers in Te Papa-i-Oea, an environmental taiao project in Whakaki and



skateboarding activities for girls and young wahine in Tūranganui-a-Kiwa.

We planned and developed our Champion Funding and are excited about developing partnerships with rangatahi organisations across the rohe. The Champion Funding allows us to support and strengthen organisations already doing mahi in the youth development sector and to increase the outreach of services available to rangatahi in the ECCT region. We hope for this process to continue so we can expand to supporting new and upcoming organisations and eventuate into partnership funding.

Our rōpū has expanded and evolved. We have had new rangatahi come and join us to add their knowledge and experience to our mahi. This keeps us current with the mahi we are growing. We have come along since the first wānanga was held to kickstart the development of the Action Plan back in 2020.

Our intentions are clear for what we want to achieve. We continue to challenge the underlying systems that cause poverty, racism, exclusion, and lack of rangatahi voice and replace this with rangatahi strengths, mana taurite, access and open doors, voice and power-sharing between adults and rangatahi.

We are working hard on more funding initiatives to make as much impact as we can with our Action Plan over the next year.

“Tū whitia te hopo” Feel the fear and do it anyway

Thanks to all the rangatahi who were involved in leading the development of the Rangatahi Action Plan and those who have joined us in 2022 to move our kaupapa forward.

Keenan Kaiwai - Tūranga-nui-a-Kiwa
Trevor Waikawa - Whakaki
Piripi Ropitini - Nūhaka
Gayle Moana-Johnson - Te Papa-i-Oea
Geordie Parrant - Horowhenua
Molly Fuauli - Horowhenua
Mihikotukutuku-Maira Lawson - Tararua
Wiremu Rupapere - Wairarapapa
Harlem-Cruz Ihaia - Ahuriri
Stormy Peni - Shannon
Jasmine Pai - Te Papa-i-Oea
Ruby Wilton - Wairarapa
Jy Henare Casford - Eketahuna
Leeroy Harris - Pahiatua
Mirianna Mudford - Woodville
Dante Budd - Te Papa-i-Oea
Darleen Te Whare-Rogers - Wairarapapa
Jayson Matete - Tūranga-nui-a-Kiwa
Riccarda Pohatu - Tūranga-nui-a-Kiwa
Ali Muhammed - Te Papa-i-Oea



A new mower! Onga Onga Golf Cub



Wiremu Rupapere from TiraRangatahi with Mākoura College students, Masterton



TiraRangatahi members: Piripi Ropitini & Gayle Moana-Jackson



Wairarapa Rescue Trust



Official opening of Ngā Ara Tipuna. Central Hawke's Bay District Council



Sport Gisborne Tairāwhiti



Awahi Trust



Life Flight



Gisborne Harriers Club



Mapuna the White Kiwi – Pūkaha Mount Bruce Board



Sport Gisborne Tairāwhiti



Dance & Arts Therapy NZ



Hawke's Bay Dragon Boat Club



Kylie with her hearing dog Brie. Hearing Dogs NZ

Eastern & Central Community Trust

Summary Financial Statements

Summary Statement of Comprehensive Revenue & Expense

For the year ended 31 March 2022

	2022	2021
	\$000	\$000
Revenue		
Dividend and interest income	6,646	6,551
Foreign exchange gains/(losses)	(582)	(9,462)
Changes in fair value of derivatives and investments	6,323	43,372
Sundry Income	-	109
	12,387	39,570
Expenses		
Administrative expenses	756	576
Investment expenses	441	447
Personnel expenses	751	681
Community grants	4,392	3,896
	6,340	5,600
Surplus / (Deficit) for the year	6,047	33,970
Total comprehensive revenue and expense for the year	6,047	33,970

Summary Statement of Changes in Equity

For the year ended 31 March 2022

	2022		
	Trust Capital	Trust Reserve	Total Equity
	\$000	\$000	\$000
Opening balance as at 1 April	166,448	45,141	211,589
Total comprehensive revenue and expense for the year	-	6,047	6,047
Transfer to trust capital	8,000	(8,000)	-
Equity as at 31 March 2022	174,448	43,189	217,637

	2021		
	Trust Capital	Trust Reserve	Total Equity
	\$000	\$000	\$000
Opening balance as at 1 April	155,618	22,006	177,619
Total comprehensive revenue and expense for the year	-	33,970	33,970
Transfer to trust capital	10,830	(10,830)	-
Equity as at 31 March 2021	166,448	45,141	211,589

Summary Statement of Financial Position

As at 31 March 2022

	2022 \$'000	2021 \$'000
Current Assets		
Cash & cash equivalents	16,866	11,192
Investments	201,545	201,070
Other current assets	2	46
	218,413	212,308
Non Current Assets		
Property, plant and equipment	876	892
Total Assets	219,289	213,201
Equity		
Trust Capital	174,448	166,448
Trust Reserve	43,189	45,141
	217,637	211,589
Current Liabilities		
Trade and other payables	188	229
Grant payables	1,464	1,382
	1,652	1,611
Total Equity and Liabilities	219,289	213,201

Summary Statement of Cash Flows

For the year ended 31 March 2022

	2022 \$'000	2021 \$'000
Net Cash flows from operating activities	5,687	(2,947)
Net Cash flows from investing activities	(14)	256
Net increase / (decrease) in cash held	5,673	(2,691)
Cash & cash equivalents as at 1 April	11,192	13,883
Cash & cash equivalents at 31 March	16,866	11,192

Eastern & Central Community Trust

Notes to the Summary of Financial Statements

1. Reporting Entity

The Eastern and Central Community Trust Inc. (the Trust) is a Charitable Trust domiciled in New Zealand and incorporated in accordance with the provisions of the Community Trusts Act 1999.

The Trust is primarily involved in the management of the investment of assets and the distribution of donations to the community within a designated North Island region of New Zealand.

2. Basis of Preparation

a) Statement of Compliance

The summary financial statements have been prepared in accordance with the Public Benefit Entity Standards as they relate to summary financial statements (PBE FRS 43) and have been extracted from the full financial statements.

For the year ended 31 March 2022, the Trust prepared its financial statements using the Public Benefit Entity Standards Reduced Disclosure Regime appropriate for Tier 2 Not-For-Profit Public Benefit Entities.

b) Basis for Measurement

The financial statements have been prepared on the basis of historical cost modified as defined in the specific accounting policies in the full financial statements except for investments which are at fair value through surplus or deficit.

c) Functional and Presentation Currency

The summary financial statements are presented in New Zealand dollars and rounded to the nearest thousand dollars.

d) Summary Financial Statements

The summary is extracted from the full financial statements authorised for issue by the Trustees on Thursday 28 July 2022. Once issued the Trustees do not have the power to amend these statements. The full financial statements of the Trust have been

audited by Baker Tilly Staples Rodway Audit Limited who have issued an unmodified audit opinion. Baker Tilly Staples Rodway Audit Limited have audited these summary financial statements and found them to be consistent with the full financial statements.

The summary financial statements do not include all the disclosures provided in the full financial statements and cannot be expected to provide as complete an understanding as is provided by the full financial statements.

3. Related party transactions

From time to time, the Trustees may be involved at the governance level in grant recipient organisations. Total grants paid to these related grantee organisations for the year was \$401,100 (2021: \$290,976) of which \$217,800 is yet to be paid at balance date. Trustee fees for the year were in total \$153,855 (2021: \$131,262).

4. Capital commitments

The Trust has a commitment of \$13.98 million (2021: \$17.6 million) being the uncalled balance of the private equity funds with Pioneer Capital Partners Limited II \$55 thousand, Pioneer Capital Partners III \$0.9 million, Pioneer Capital Partners IV \$2.6 million, Waterman Capital III \$1.0 million, Waterman Capital IV \$3.75 million, Direct Capital V Limited Partnership \$0.6 million, Direct Capital VI \$4.9 million and Morrison & Co \$0.1 million.

5. Subsequent events

Since 31 March 2022 there has been a significant decline in the fair value of the investment portfolio which is the nature of long-term investments. The reduction in share values globally since March 2022 has been driven by interest rate increases and recessionary fears.

A copy of the full financial statements can be obtained from the ECCT website www.ecct.org.nz and is available from the ECCT Office, PO Box 1058, Hastings, 4156, Tel **06 878 7200** or **0800 878 720**, or send a request to info@ecct.org.nz

Report of the Independent Auditor on the Summary Financial Statements

To the Trustees of Eastern and Central Community Trust Inc.



Opinion

The summary financial statements which comprise the summary statement of financial position as at 31 March 2022, the summary statement of comprehensive revenue and expense, summary statement of changes in equity, and summary statement of cash flows for the year then ended, and related notes, are derived from the audited financial statements of Eastern and Central Community Trust Inc. for the year ended 31 March 2022.

In our opinion, the accompanying summary financial statements are consistent, in all material respects, with the audited financial statements, in accordance with PBE FRS-43: Summary Financial Statements issued by the New Zealand Accounting Standards Board.

Our report is made solely to the Trustees of Eastern and Central Community Trust Inc., in accordance with the Community Trusts Act 1999. Our audit work has been undertaken so that we might state those matters which we are required to state to them in an auditor's report and for no other purpose. To the fullest extent permitted by law, we do not accept or assume responsibility to anyone other than the Trustees of Eastern and Central Community Trust Inc., for our audit work, for our report or for the opinions we have formed.

Summary Financial Statements

The summary financial statements do not contain all the disclosures required by Public Benefit Standards Reduced Disclosure Regime (PBE Standards RDR). Reading the summary financial statements and the auditor's report thereon, therefore, is not a substitute for reading the audited financial statements and the auditor's report thereon. The summary financial statements and the audited financial statements do not reflect the effects of events that occurred subsequent to the date of our report on the audited financial statements.

The Audited Financial Statements and Our Report Thereon

We expressed an unmodified opinion on the audited financial statements in our report dated 28 July 2022.

Other Information

The Trustees are responsible for the other information. The other information comprises the information included in the Trust's annual report for the year ended 31 March 2022 (but does not include the summary financial statements and our auditor's report thereon).

Our opinion on the summary financial statements does not cover the other information and we do not express any form of audit opinion or assurance conclusion thereon.

In connection with our audit of the summary financial statements, our responsibility is to read the other information and, in doing so, consider whether the other information is materially inconsistent with the summary financial statements or our knowledge obtained in the audit or otherwise appears to be materially misstated.

If, based on the work we have performed, we conclude that

there is a material misstatement of this other information, we are required to report that fact.

We have nothing to report in this regard.

Responsibilities of the Trustees for the Financial Statements

The Trustees are responsible on behalf of the Trust for the preparation of the summary financial statements in accordance with PBE FRS-43: *Summary Financial Statements*.

Auditor's Responsibility

Our responsibility is to express an opinion on whether the summary financial statements are consistent, in all material respects, with the audited financial statements based on our procedures, which were conducted in accordance with International Standards on Auditing (New Zealand) ISA(NZ) 810 (Revised), Engagements to Report on *Summary Financial Statements*.

Other than in our capacity as auditor we have no relationship with, or interests in, Eastern and Central Community Trust Inc.

Matters Relating to the Electronic Presentation of the Audited Financial Statements

This audit report relates to the summary financial statements of Eastern and Central Community Trust Inc. for the year ended 31 March 2022 included on Eastern and Central Community Trust Inc's website. The Trustees of Eastern and Central Community Trust Inc. are responsible for the maintenance and integrity of Eastern and Central Community Trust Inc's website. We have not been engaged to report on the integrity of Eastern and Central Community Trust Inc's website. We accept no responsibility for any changes that may have occurred to the summary financial statements since they were initially presented on the website.

The audit report refers only to the summary financial statements named above. It does not provide an opinion on any other information which may have been hyper linked to or from these summary financial statements. If readers of this report are concerned with the inherent risks arising from electronic data communication they should refer to the published hard copy of the audited summary financial statements and related audit report dated 28 July 2022 to confirm the information included in the audited summary financial statements presented on this website.

Legislation in New Zealand governing the preparation and dissemination of summary financial statements may differ from legislation in other jurisdictions.

BAKER TILLY STAPLES RODWAY AUDIT LIMITED

Hastings, New Zealand

28 July 2022

2021-2022 Grants by Region

Gisborne / Tairāwhiti

Atawhai Charitable Trust	10,000
Cancer Society of NZ Gisborne East Coast Centre Trust	10,000
Club Surfcity Inc	5,000
Comet Swimming Club Inc	5,000
Eastland Helicopter Rescue Trust	5,000
Eastland Sports Foundation Education Trust	80,000
Gisborne Boardriders Club Inc	4,000
Gisborne Boys High School	300
Gisborne Boys High School	1,000
Gisborne Harrier Club Inc	3,000
Gisborne International Music Competition	2,400
Gisborne Land Search & Rescue C/Trust	5,000
Gisborne Mountain Bike Club Inc	25,000
Gisborne Museum of Art & History Trust	4,500
Gisborne Rowing Club	2,500
Gisborne Thistle Assn Football Club	5,000
Gisborne Toy Library	2,300
Gisborne Unity Theatre Inc	3,300
Gisborne Youth Sports Charitable Trust	3,000
Gizzy Kai Rescue Charitable Trust	5,000
He Awa Ora, He Tai Ora, Healthy Rivers	2,500
Living Sea...	2,500
Huringa Pai Charitable Trust	5,000
Kingdom Come	5,000
Matapuna Trust	250,000
Midway Surf Life Saving Club Gisborne Inc	5,000
Muriwai School	9,000
Pakirikiri Marae	33,000
Poverty Bay Polo Club Inc	13,600
Presbyterian Support East Coast	10,000
Riding for Disabled – Gisborne	5,000
Stroke Tairāwhiti	5,000
Supergrans Tairāwhiti Trust	5,000
Swim of Life Tairāwhiti	30,000
Tairāwhiti Adventure Trust	50,000
Tairāwhiti Adventure Trust	4,000
Tairāwhiti Community Voice Inc	4,000
Tairāwhiti REAP	5,000
Te Aka Ora Charitable Trust	10,000
Te Aroha Kanarahi Trust	5,000
Te Aroha Kanarahi Trust	5,000
Te Hapori Disability Trust Board	7,500
Te Hauora o Turanganui a Kiwi Ltd	5,000
Te Kura Kaupapa Maori o Horouta Wananga	10,000
Tiniroto Community Assn Inc	2,460
Tonui Collab Charitable Trust	17,400
Waikanae Surf Life Saving Club Inc	5,000
Womens Native Tree Project Trust	3,000
YMCA Gisborne	500

Hawke's Bay

Acorn Project Hawke's Bay	5,000	Eskview United Assn Football Club Inc	2,000
Age Concern – Havelock North Inc	5,000	Flaxmere Baptist Church Community Trust	5,000
Age Concern Hawke's Bay	5,000	Flaxmere Pony Club	1,000
Age Concern Napier Inc	5,000	Foto Iwi	1,000
Ahuriri Maori Wardens C/Trust	4,700	Got Drive Community Trust	6,447
Air Training Corps – No 11 Squadron	2,200	Graeme Dingle Foundation Hawke's Bay	15,000
Aphasia NZ Charitable Trust	3,620	Greendale Tennis Club Inc	20,000
Arts Inc Heretaunga Inc	25,000	Guardians of the Ruakituri Inc	7,000
Arts Inc Heretaunga Inc	5,000	Hastings Arts & Culture Trust	10,000
Ashley Clinton/Makaretu Hall	20,625	Hastings Bridge Club Inc	3,500
Asthma & Respiratory Hawke's Bay Services Trust	5,000	Hastings Christian School	50,000
Atea a Rangi Educational Trust	2,500	Hastings Girls High School	5,250
Aubyn Live Theatre Inc	4,000	Hastings Golf Club Inc	6,200
Awhi Charitable Trust	4,800	Hastings High School Old Girls Netball Club	1,684
Backline Charitable Trust	3,000	Hastings Tennis & Squash Club Inc	17,000
Basketball Hawke's Bay Inc	5,000	Havelock North Cricket Club	5,000
Basketball New Zealand Inc	20,000	Havelock North Intermediate School	18,000
Big Brothers Big Sisters Hawke's Bay	5,000	Havelock North Playcentre	9,000
Birchleigh Polo Club	5,000	Havelock North Wanderers AFC	5,000
Birthingright (HB) Child & Family Care Trust	5,000	Hawke's Bay Clay Target Club Inc	4,000
Bledisloe School	25,000	Hawke's Bay & East Coast Aero Club Inc	25,000
Bluff Hill Bowling Club Inc	5,000	Hawke's Bay Bird & Wildlife Rescue	2,300
Bowls Napier Inc	5,000	Hawke's Bay BMX Club Inc	50,000
Bowls Omaruni Inc	5,000	Hawke's Bay Caledonian Pipe Band	3,000
Brain Injury Assn (Hawke's Bay) Inc	5,000	Hawke's Bay Canoe Polo Assn Inc	6,000
Cancer Society of NZ – Hawke's Bay	10,000	Hawke's Bay Community Fitness Centre Trust	5,000
Cape Coast Community Trust	3,000	Hawke's Bay Cricket Assn Inc	14,000
Central & Southern Hawke's Bay Show Jumping Group	10,000	Hawke's Bay Digital Archives Trust	7,500
Central Connect Whare Manaaki Inc	5,000	Hawke's Bay Golf Club Inc	5,000
Central Hawke's Bay Cricket Club	5,000	Hawke's Bay Hockey Assn Inc	5,000
Central Hawke's Bay District Council	29,000	Hawke's Bay Indoor Cricket Club Inc	2,000
Central Hawke's Bay District Council	5,000	Hawke's Bay Kayak Racing Inc	3,000
Central Hawke's Bay District Council	5,000	Hawke's Bay Land Search & Rescue Inc	5,000
Central Hawke's Bay Hockey Assn Inc	6,000	Hawke's Bay Motorcycle Club Inc	5,000
Central Hawke's Bay Rugby Sports Club Inc	5,000	Hawke's Bay Multiple Sclerosis Society	2,500
Central Hawke's Bay District Council	2,000	Hawke's Bay Multisports Club Inc	5,000
Christian Love Link Napier Hastings Inc	4,000	Hawke's Bay Netball Centre Inc	7,000
Citizens Advice Bureau – Hastings	5,000	Hawke's Bay Optimist Yacht Trust	2,500
Citizens Advice Bureau – Napier	5,000	Hawke's Bay Orchestra	4,000
Connect Youth & Community Trust	5,000	Hawke's Bay Readers & Writers C/Trust	5,000
Cornwall Cricket Club (Hastings) Inc	5,000	Hawke's Bay Regional Sports Park Trust	200,000
Cycling Without Age Napier Trust	5,300	Hawke's Bay Rescue Helicopter Trust	5,000
Eastern Institute of Technology	8,400	Hawke's Bay Rowing Club Inc	5,000
Epic Ministries	3,950	Hawke's Bay Softball Assn Inc	5,000
Epic Ministries Inc	5,000	Hawke's Bay Soul Choir Inc	1,000
Eastern Institute of Technology	8,400	Hawke's Bay Squash Rackets Club Inc	5,000
Epic Ministries	3,950	Hayseed Trust Inc	5,000
Epic Ministries Inc	5,000	Hearing Assn – Hastings	3,000
Eskview & Districts Rugby Football Club Inc	3,700	Hearing Assn – Napier	5,000

Gisborne total
\$693,260

2021-2022 Grants by Region

Hawke's Bay

Hearing Assn Inc – Southern Hawke's Bay	1,000	Public Dreams Charitable Trust	5,000	Whakaki Marae Trust	5,000
Heretaunga Sundevils Swim Team	5,000	Pukehou School	1,800	Whangawehi Catchment Management Group	5,000
Heretaunga Womens Centre Inc	5,000	Raukatauri Music Therapy Trust	5,000	Whangawehi Catchment Management Gp	10,000
Hohepa Homes Trust Board	8,700	Read NZ Te Pou Muramura Inc	3,500	William Colenso College	10,000
Horizons Basketball Trust	2,000	Regional Indoor Sports & Events Centre	200,000	William Colenso College	500
Institute of Registered Music Teachers	1,000	Regional Indoor Sports & Events Centre Trust	3,100	William Colenso College	1,000
Of NZ – Hawke's Bay	1,000	Re-Source	5,000		
Kaisen Charitable Trust	5,000	Rezpect	1,970		
Karamu High School	3,000	Riding for the Disabled – Napier Group	5,000		
Kaitiwhenua Stream Landcare Group Inc	2,000	Rongomaiwahine Iwi Charitable Trust	5,000		
Kereru Community Bus Inc	11,500	Rotary Club of Taradale Charitable Trust	1,000		
Kia Toa Bowling Club Inc	4,000	Rugby League Hawke's Bay Inc	5,000		
Kids for Kids Charitable Trust	6,000	Scout Assn – Westshore Scout Group	3,000		
Ko Wai Tou Ingoa Hauora Charitable Trust	5,000	Scout Assn – Havelock North Scout Group	3,000		
Linden Singers of Hawke's Bay Inc	1,900	Sea Sisters	5,000		
Lindisfarne College	1,000	Spirit of Napier Lions Club Inc	1,500		
Lymph Info Trust	2,000	Sport Hawke's Bay	106,120		
Maca Sports Leadership Charitable Trust	5,000	Sportslink Charitable Trust	10,000		
Mahia Golf Club Inc	5,000	St Johns Presbyterian Church – Hastings	5,000		
Marching Hawke's Bay Assn Inc	3,000	STAROS Affected by Suicide Support Trust	3,500		
Marewa Sports Club Inc	2,000	Tahuri Mai Charitable Trust	3,500		
Matahiwi Marae	5,000	Takapau Golf Club Inc	4,000		
Multicultural Assn Hawke's Bay Inc	4,000	Takapau Playcentre	1,000		
Napier Aquahawks Swim Club Inc	4,000	Takapau School	5,000		
Napier City Council	9,900	Taradale Bridge Club Inc	5,000		
Napier City Council	5,000	Taradale Bridge Club Inc	156,000		
Napier City Council	15,000	Taradale Cricket Club Inc	5,000		
Napier City Rovers Football Club	5,000	Taradale Pottery Group	5,000		
Napier Civic Choir Inc	5,000	Te Aratika Academy	12,000		
Napier Old Boys Marist Cricket Club Inc	4,000	Te Awa School	14,500		
Napier Old Boys Marist Rugby Football Club	5,000	Te Kura o Pakipaki	8,300		
Napier Pirates Rugby & Sports Club	5,000	Te Whakaritorito Trust	4,000		
Napier Sailing Club	5,000	Te Whare Aroha o Nga Mokopuna Inc	2,500		
Napier Technical Memorial Brass Band Inc	3,000	Tennis Seniors Hawke's Bay Inc	1,138		
Neighbours Day Aotearoa Charitable Trust	1,000	Totara Health Limited	3,500		
Nga Toi Hawke's Bay	3,000	Trojan Swim Team Inc	5,000		
Nga Tukemata o Kahungunu Charitable Trust	5,000	Twyford Raupare Memorial Recreational Centre	5,000		
Ocean Beach Kiwi Surf Life Saving Club Inc	5,000	Waimarama Maori Committee	5,000		
Omahu Huia Rugby League Club Inc	4,000	Waipawa Country United Junior Rugby Club	1,000		
One Voice Community Services Trust	5,000	Waipawa Golf Club Inc	5,000		
One Voice Community Services Trust	8,400	Waipukurau Golf Club Inc	14,600		
Onga Onga Golf Club	12,000	Waipukurau Lawn Tennis & Squash Rackets	22,000		
Orchestrate Hawke's Bay	2,500	Waipukurau Little Theatre Inc	2,500		
Pakistan & Friends Hawke's Bay Assn Inc	4,000	Waipukurau School	600		
Parkvale School	47,500	Wairoa Community Development Trust	3,000		
Patoka School	5,000	Wairoa District Council	50,000		
Peoples Advocacy Society Inc	5,000	Wairoa Young Achievers Trust	800		
Peterhead School	12,000	Wanstead Polo Club Inc	5,000		
Porangahau Country Club Inc	5,000	Westshore Surf Lifesaving Club Inc	5,000		
				Hawke's Bay Total	\$1,944,004

Horowhenua

Age Concern Horowhenua Inc	5,000
Big Bang Adventure Charitable Trust	3,940
Coley Street School	70,000
Divine River NZ Trust	3,800
Foxton & Beach Bowling Club	9,000
Foxton Districts Budget Service	5,000
Foxton Rugby Club Inc	3,421
Foxton Windmill Trust Inc	5,000
Hapai Te Hapori	1,500
Hearing Assn – Horowhenua Inc	4,000
Horowhenua District Council	25,000
Horowhenua District Health Transportation	5,000
Horowhenua Events Centre Trust	5,000
Horowhenua Kapiti Rugby Football Union Inc	5,000
Horowhenua Kids Teens & Family Trust	5,000
Horowhenua Sports Academy	2,000
Horowhenua Sports Turf Trust	38,000
Horowhenua Supergrans Inc	5,000
Koputaroa Hall Society Inc	1,200
Horowhenua Sports Academy	2,000
Horowhenua Sports Turf Trust	38,000
Horowhenua Supergrans Inc	5,000
Koputaroa Hall Society Inc	1,200
Levin Christian Care Trust	5,000
Levin Golf Club Inc	8,345
Levin Harrier & Multisport Club	1,000
Levin Hustle Baseball Inc	4,800
Levin Menz Shed	9,500
Levin Old Boys Cricket Club Inc	3,000
Levin Soccer Club Inc	5,000
Pasifika for Tomorrow	3,460
St Vincent de Paul Society – Levin	5,000
Te Awahou Maori Womens Welfare League	5,000
Waiopahu College	48,741
Waiopahu College	250
Wildlife Foxton Trust	3,000
Wildlife Foxton Trust	3,000

Horowhenua Total **\$303,957**

2021-2022 Grants by Region

Manawatū

Age Concern NZ Palmerston North & Districts	4,000
Alliance Francaise Palmerston North Inc	5,000
Alzheimers Society Manawatū Inc	5,000
Ashhurst Pohangina Rugby Football Club	2,100
Ashhurst School	2,100
Basketball Manawatū Inc	2,500
Bay Independent Hockey Club Inc	3,000
Bike Manawatū Inc	3,000
Cancer Society of NZ Manawatū Centre Inc	10,000
Celtic Spirit Inc	5,000
Central Canoe Polo Assn Inc	2,000
Citizens Advice Bureau – Palmerston North	5,000
Dance Therapy NZ	8,000
Digits Charitable Trust	9,000
Environment Network Manawatū Inc	5,000
Eventing Central Districts	5,000
Feilding & District Art Society Inc	5,000
Feilding Amateur Swimming Club Inc	3,000
Feilding Contract Bridge Club Inc	4,000
Feilding Croquet Club	500
Feilding Flying Club Inc	18,000
Financial Freedom Trust	5,000
Free Store Charitable Trust	5,000
Freyberg High School	7,500
Freyberg High School	540
Freyberg High School	1,150
Himatangi Beach Bowling Club	4,000
Hiwinui School	1,500
Hockey Manawatū Inc	30,000
Interdenominational Tertiary Chaplaincy	4,000
Trust Board	5,000
Kimbolton Arts & Sculpture Trust	5,000
Legacy Centre	1,000
Mana Waikaha Limited	5,000
Manawatū Access Radio Charitable Trust	5,000
Manawatū Afghan Society Inc	4,000
Manawatū Chinese Community Trust	4,000
Manawatū District Neighbourhood Support	5,000
Manawatū Jazz Club Inc	6,900
Manawatū Mountain Bike Club Inc	70,000
Manawatū Multicultural Council	4,000
Manawatū Regional Volleyball Assn Inc	5,000
Manawatū Rural Support Service Inc	5,000
Manawatū Scottish Pipe Band Inc	4,000
Manawatū Striders Inc	1,000
Manfeild Park Trust	5,000
Massey University	3,500

Massey University Football Club	5,000
MentorEd Charitable Trust	5,000
OnBoard Skate Inc	5,000
Palmerston North City NeighbourhoodSupport	5,000
Palmerston North Interfaith Group	741
Palmerston North Marist High School Old Boys Rugby Club	2,500
Palmerston North Parents Centre In	5,000
Palmerston North Street Van Inc	5,000
Plant to Plate Aotearoa	5,000
PN Marist Football Club Inc	5,000
PTC Trust	7,200
Rangitikei Golf Club Inc	6,000
Roslyn Primary School	3,000
Rotary Club of Makino Inc	4,500
Ruahine Endurance Club	1,250
Scout Assn – Milson Scout Group	5,000
Snapback Gym Inc	5,000
Special Olympics Manawatū	5,000
Sport Manawatū Charitable Trust	106,000
St John Feilding Area Committee	10,000
Tangimoana Commnity Committee	1,500
Te Aroha Noa Community Services Trust	5,000
Te Aroha Noa Community Services Trust	2,000
Te Aroha Noa Community Services Trust	1,500
Te Ha o Hine-ahu-one Palmerston North Womens Health Collective	5,000
Te Whare o Nga Wahine Palmerston North Womens Centre	2,500
Tennis Manawatū Inc	5,000
U3A Manawatū Inc	1,000
Whareiti Maori Culture Group	5,000

Manawatū Total \$523,981

Tararua

Bush Ruahine Indoor Bowls Centre Inc	4,450
Dannevirke & Districts Pony Club Inc	1,000
Dannevirke Community Vehicle Trust	8,000
Dannevirke Smallbore Rifle Club	3,000
Dannevirke Sports Club Inc	5,000
Dannevirke Tennis Club Inc	1,500
Eketahuna Golf Club Inc	4,000
Eketahuna Our Town Inc	4,000
Eketahuna Tennis Club Inc	407
Kumeroa Domain Board	4,800
Makirikiri Marae Komiti	5,000
Mangamaire Community Hall Society	3,500

Norsewood Pioneer Museum Society Inc	2,000
Norsewood War Memorial Community Centre	2,500
Pahiatua Toy Library Inc	1,700
Pongaroa Early Years Inc	5,000
Pukaha Mount Bruce Board	250,000
Ruahine Ramblerz Leisure Marching Team	1,650
Tararua College	10,000
Tararua Community Youth Services Inc	10,000
Tararua District Council	20,000
Tararua Rural Education Activities Programme Inc	7,500
Te Tahua Trust	18,800
Te Wananga o Tamiki Nui a RuaCharitable Trust	5,000
Weber Community Committee Inc	4,000
Whareiti Maori Cultural Club	2,066

Tararua Total \$384,873

Wairarapa

Access Radio Wairarapa	5,000
Aratoi Regional Trust	27,500
Autism Wairarapa Charitable Trust	5,000
Bowls Wairarapa Inc	4,000
Carterton Community Toy Library	1,500
Carterton School	1,200
Castlepoint Golf Club Inc	3,000
Castlepoint Racing Club Inc	3,000
CCS Disability Action Wairarapa Inc	2,500
Central Wairarapa Indoor Bowls Assn Inc	5,000
Citizens Advice Bureau – Wairarapa	3,000
Country Village Heaven	6,000
East Coast Rugby Football Club Inc (Masterton)	4,000
Eventing Wairarapa	3,000
Featherston Booktown Trust	10,000
Featherston Community Centre Charitable Trust	4,000
Featherston Hockey Club Inc	1,080
Featherston Rugby Football Club Inc	5,000
Friends of the Anzac Memorial Bridge Kaiparoro Inc	1,000
Gladstone Womens Hockey Club	1,000
Greytown Football Club	2,000
Hokai Tahī	5,000
House of Science Wairarapa Charitable Trust	5,000
Hutt Valley Badminton Sub-Assn Inc	1,000
Kidz Need Dadz Charitable Trust–Wellington	10,000
King Street Artworks Inc	5,000
Learning Disabilities Assn Wairarapa	2,000

2021-2022 Grants by Region

Makoura College	1,500
Manaaki ki Wairarapa Community Trust	5,000
Martinborough Mens Shed Inc	5,500
Martinborough Music Festival Trust	4,000
Masterton Croquet Club Inc	5,000
Masterton Intermediate School	5,000
Masterton Motorplex Inc	1,400
Masterton Squash Rackets Club	25,000
Presbyterian Support Centre	4,400
Red Star Sports Inc	5,000
Red Star Squash Rackets Club Inc	3,000
Riversdale Surf Life Saving Club	3,690
Ruamahanga Restoration Trust	17,000
Shift Foundation	5,000
St Marks Anglican Church	5,000
Star Jam Charitable Trust	5,000
Sustainable Wairarapa Inc	1,000
The Ruth Project Wairarapa Charitable Trust	3,700
Wairarapa Womens Centre Inc	5,000
Wairarapa Balloon Society Inc	23,000
Wairarapa Community Centre Trust	5,000
Wairarapa Cricket Assn Inc	5,000
Wairarapa Cricket Assn Inc	5,000
Wairarapa Dragon Boat Club Inc	1,000
Wairarapa Endurance & CTR Club	5,880
Wairarapa Multi Sport Stadium Trust	2,000
Wairarapa Secondary School Sport	5,000
Wairarapa Tennis Assn Inc	4,500
Wellington Area Trail Riding Club Inc	2,000
Wellington Regional Orchestra Foundation	4,000
Wellington Regional Sports Education Trust	60,000
Westside Playcentre	3,700
YMCA Central	4,000

Wairarapa Total **\$366,050**

Regional

Allan Duff Charitable Foundation	5,000
Arohanui Hospice Service Trust	5,000
Auckland District Kidney Society Inc	7,000
Autism NZ Inc	7,500
Barnardos New Zealand Inc	5,000
CanInspire Charitable Trust	4,500
Canteen Aotearoa Inc	5,000
CCS Disability Action Manawatū Horowhenua Inc	2,500
CCS Disability Action Tairāwhiti Hawke's Bay	5,000
Central Squash Assn Inc	5,000
Chamber Music New Zealand Trust	10,000
Choirs Aotearoa NZ Trust	4,000

Cystic Fibrosis Assn of New Zealand	6,500
Days for Girls New Zealand	3,000
Deaf Aotearoa Holdings Ltd	10,000
English Language Partners NZ Trust	10,000
Epilepsy Assn of New Zealand Inc	10,000
Fast Track Inclusion Trust	7,000
Footnote Dance Trust Board	5,000
Girl Guides Assn NZ	15,000
Gliding Hawke's Bay & Waipukurau Inc	5,000
Gymsports New Zealand Inc	5,000
Hearing Dogs for Deaf People NZ	5,000
House of Grace Trust Inc	4,000
House of Science NZ Charitable Trust	10,000
Leukaemia & Blood Cancer NZ	8,100
Life Education Trust – Gisborne East Coast & Wairoa	5,000
Life Education Trust – Wairarapa, Tararua & Central Hawke's Bay	15,000
Lifelink Samaritans Inc	10,000
Literacy Aotearoa Charitable Trust	20,000
Manawatū Horowhenua Tararua Diabetes Trust	5,000
Mobility Assistance Dogs Trust	5,000
Motor Neurone Disease Assn of NZ Inc	9,000
National Youth Drama School Trust	5,000
No 4 District Federation of NZ Football Inc	10,000
NZ Council of Victim Support Groups Inc	20,000
NZ Down Syndrome Assn Inc	5,000
NZ Family & Foster Care Federation Inc	15,000
NZ Rural Games Trust	10,000
NZ Softball Assn Inc	15,000
Outward Bound Trust of New Zealand	5,000
Parent to Parent NZ Inc	9,000
Parkinsons NZ Charitable Trust	15,000
People First NZ Inc	10,000
RNZE Charitable Trust	4,000
Road Safety Education Ltd	10,000
Rock Quest Charitable Trust	10,000
Royal New Zealand Ballet	9,000
Royal NZ Foundation for the Blind	15,000
Royal NZ Society for the Prevention of Cruelty to Animals	20,000
Scout Association of New Zealand	7,500
Show Me Shorts Film Festival Trust Board	3,000
Sir Edmund Hilary Outdoors Education	5,000
Special Olympics New Zealand	2,931
SPELADD NZ Inc	9,100
SPELD NZ Inc	15,000
Storytime Foundation Trust Board	5,000
Stroke Central New Zealand Inc	10,000
Stroke Foundation of NZ Limited	10,000
Surfing NZ Inc	3,860
Taki Rua Productions Society Inc	5,000

Talk Link Trust	5,300
Tangata Whenua Community & Voluntary	5,000
Tennis Eastern Inc	5,000
Volunteer Central	5,000

Regional Total **\$521,791**

SUMMARY TOTALS

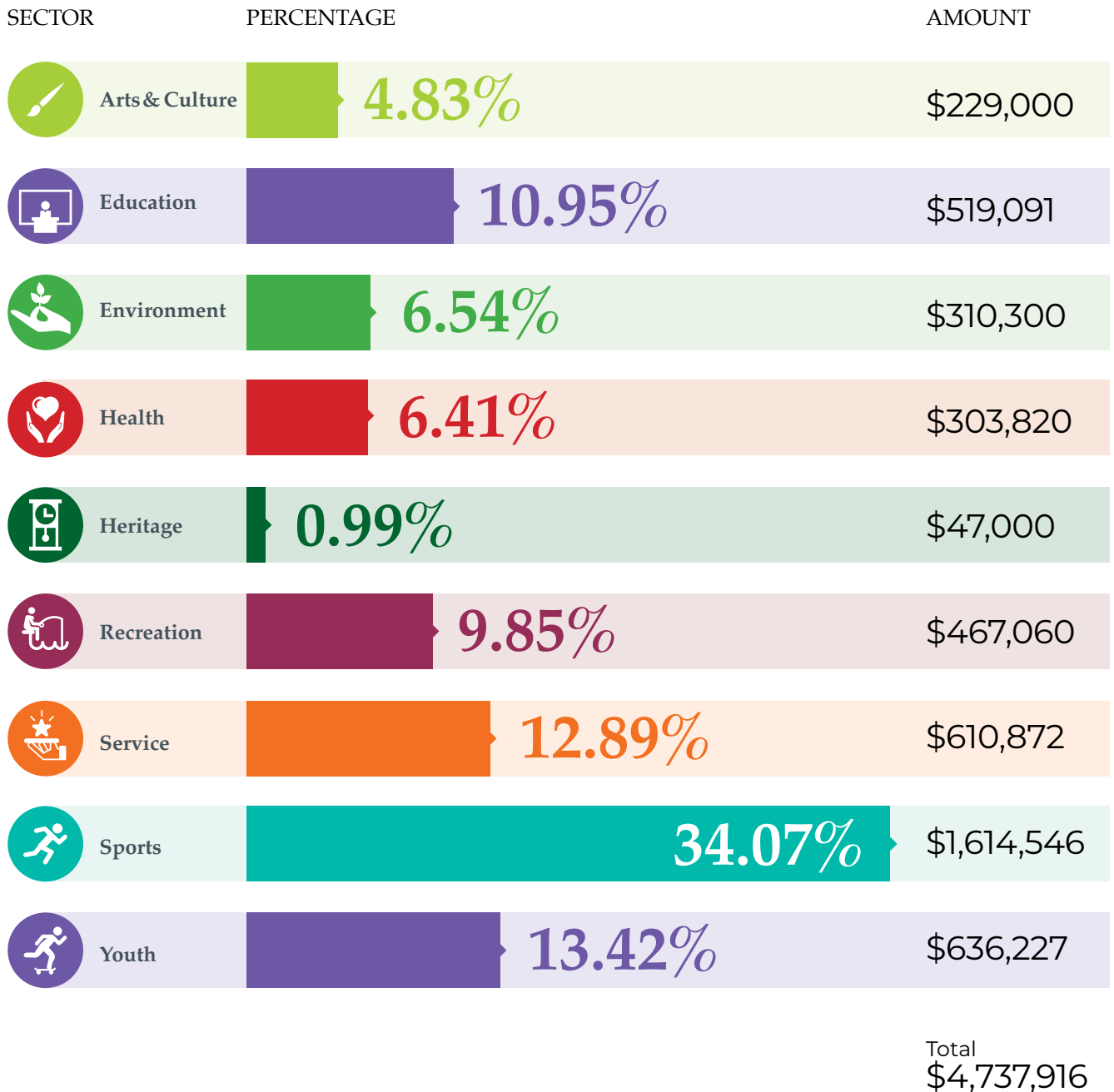
Total grants approved by region as of 31 March 2022

Gisborne	693,260
Hawke's Bay	1,944,004
Horowhenua	303,957
Manawatū	523,981
Tararua	384,873
Wairarapa	366,050
Regional	521,791

Total grants approved **\$4,737,916**

Total Grants by Sector

Financial Year distribution breakdown

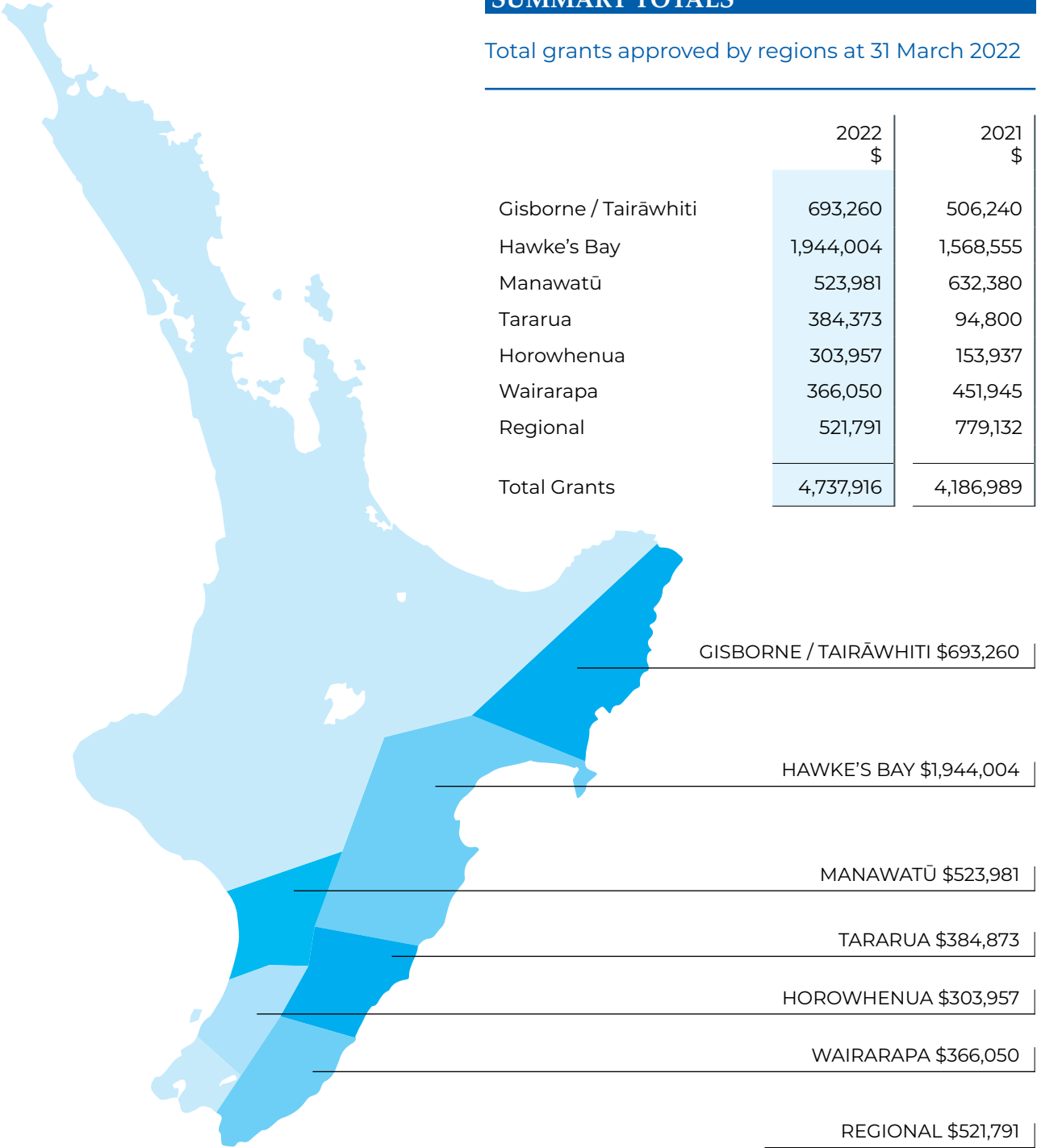


Funding by Region

SUMMARY TOTALS

Total grants approved by regions at 31 March 2022

	2022 \$	2021 \$
Gisborne / Tairāwhiti	693,260	506,240
Hawke's Bay	1,944,004	1,568,555
Manawatū	523,981	632,380
Tararua	384,373	94,800
Horowhenua	303,957	153,937
Wairarapa	366,050	451,945
Regional	521,791	779,132
Total Grants	4,737,916	4,186,989



Eastern & Central COMMUNITY TRUST

207 Nelson Street South, Hastings 4122
PO Box 1058, Hastings 4156

FreePhone: 0800 878 720 Ph: 06 878 7200 Email: info@ecct.org.nz

www.ecct.org.nz

